

Stitching Materials:

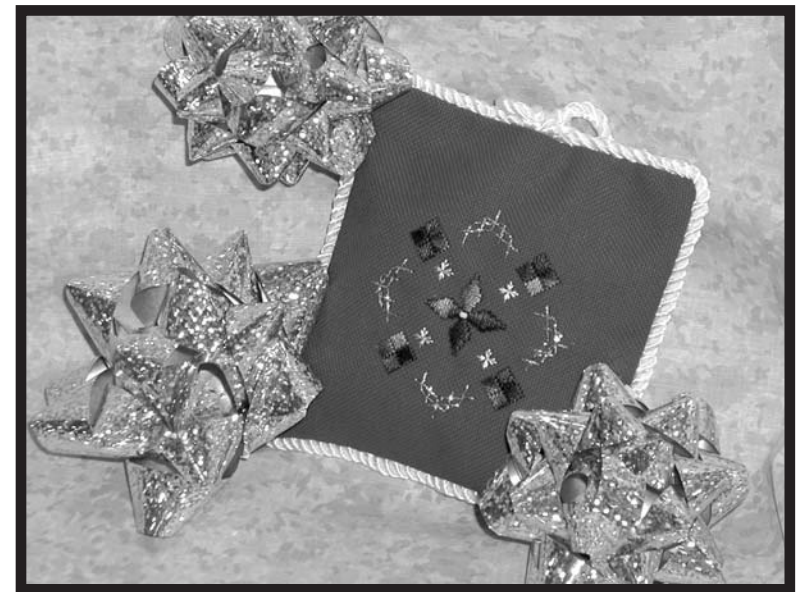
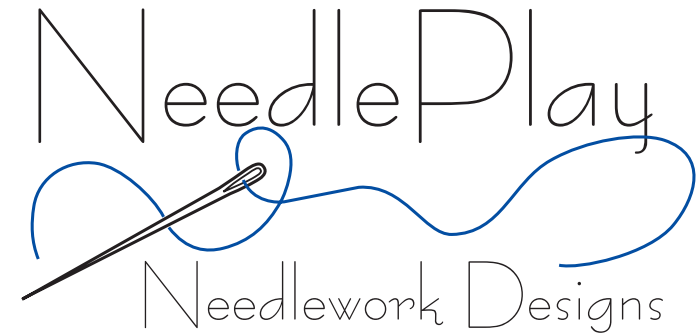
Fabric: Model Stitched on Christmas Red Jubilee Linen, 28 count
Stitch Count: 38 x 38 (2.71in. x 2.71in.)
Cut size: 6in x 6in, 2 pieces

Needle Necessities - 198

DMC Rayon Floss -- 35200 - White

Kreinik -- Blending Filament - 002HL (Gold)

Mill Hill Beads -- #00479 White or
#00557 Gold (personal preference)



Credits and Acknowledgements

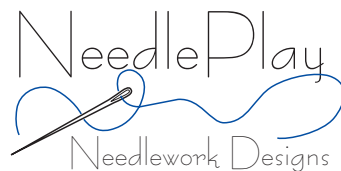
EasyGrapher Program
Davis Computer Services
New Orleans, LA

Wichelt Imports, Inc.
N162 Hwy 35
Stoddard, WI 54658
www.wichelt.com

Kreinik Mfg. Co. Inc.
Owings Mills, MD

Mill Hill Beads
1-800-447-1332

DMC Corporation
10 Port Kearney
South Kearny, NJ 07032
www.dmc.com

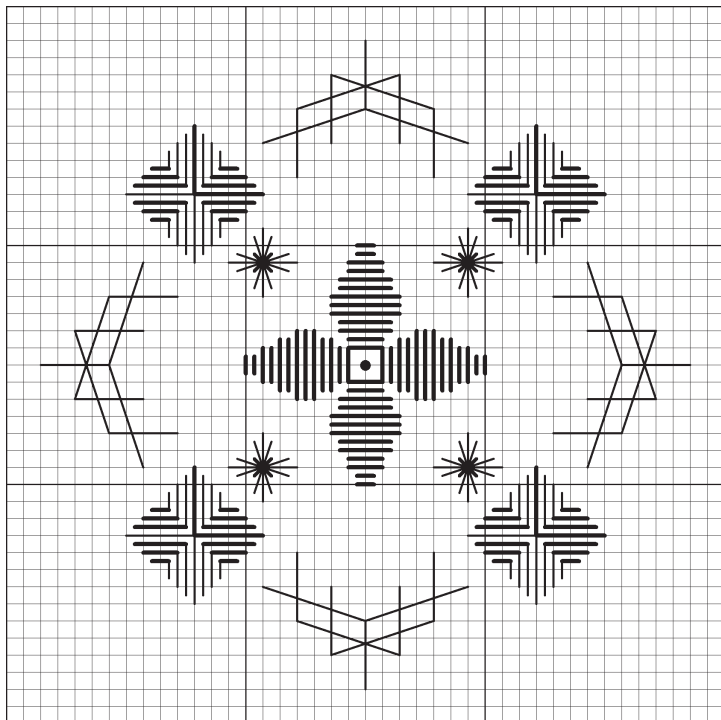


"Holiday Ornament"
© 2003 Catherine Burroughs
NeedlePlay Needlework Designs

By permission of NeedlePlay Needlework Designs, this free design may not be sold; however, it may be reproduced so long as the copyright remains intact.

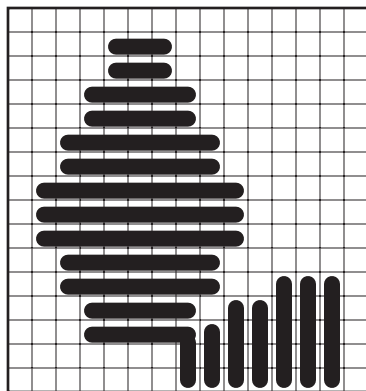
For additional information, contact
NeedlePlay Needlework Designs
at (703) 644-4945
or email : NeedlePlay@mindspring.com
Or find us at
<http://needleplay.home.mindspring.com>

Holiday Ornament

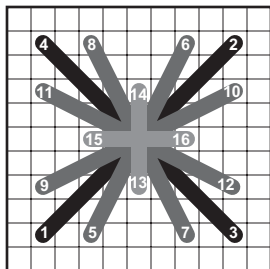


Find center of linen and work the pattern from the center outward.

Motif 1: *Satin Stitch* the center star motif using two strands of Needle Necessities - 198. Then, attach a Mill Hill bead (either gold or white) using one strand of the same thread.



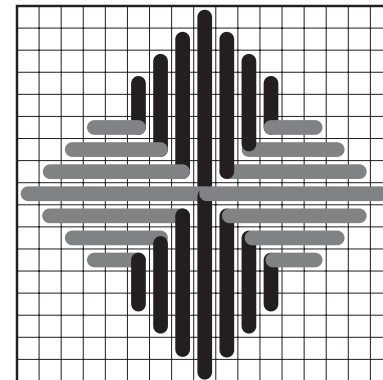
Satin Star Motif



Tied Triple Twist

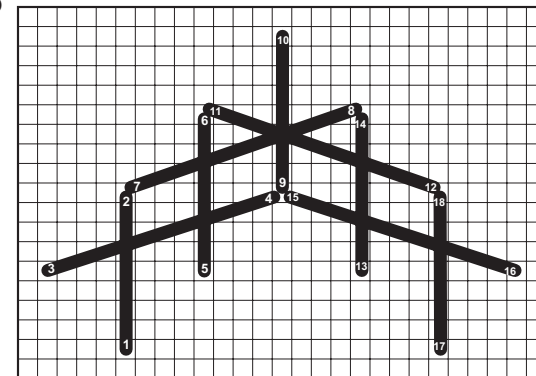
Step 2: Stitch each of the *Tied Triple Twist Stitches* using 1 strand of DMC Rayon Floss - 35200 (White) for steps 1 - 12. Then, using 2 strands of Kreinik Blending Filament - 002HL, complete steps 13-16. This creates the tied portion of the stitch.

Step 3: Using two strands of Needle Necessities - 198, stitch the *Satin Diamonds*. Follow the diagram at the right. Notice that each full diamond is made up of 4 smaller diamonds that all share holes.



Satin Diamonds

Step 4: Follow the diagram to work the *Diagonal Long Arm Cross Stitch*; using two strands of Kreinik Blending Filament - 002HL. Keep your tension to allow the filament to lie flat against the fabric.



Diagonal Long Arm Cross Stitch

Finishing:

Decide how large you want your finished ornament to be.

Pin the two pieces of fabric together, right sides facing each other. Sew straight seams on each side. Leave a small area unsewn for turning.

Carefully turn the ornament inside out. Use a pair of scissors or the end of a pen to push the corners of the ornament out.

Stuff the ornament lightly.

Attach twisted cording around the edging of the ornament by whip-stitching. Insert tails into unsewn area. Whip-stitch the opening closed with matching sewing thread.

Admire your finished ornament!